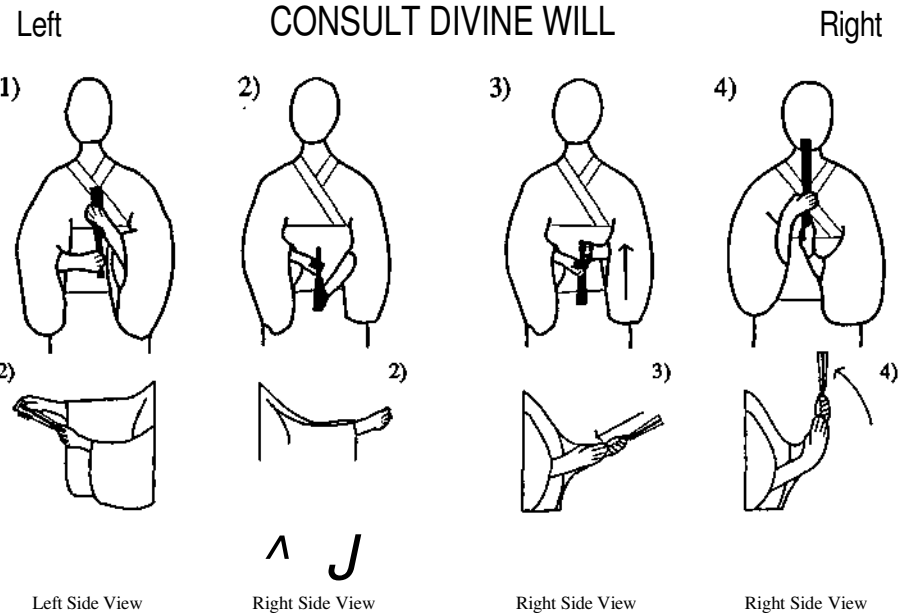
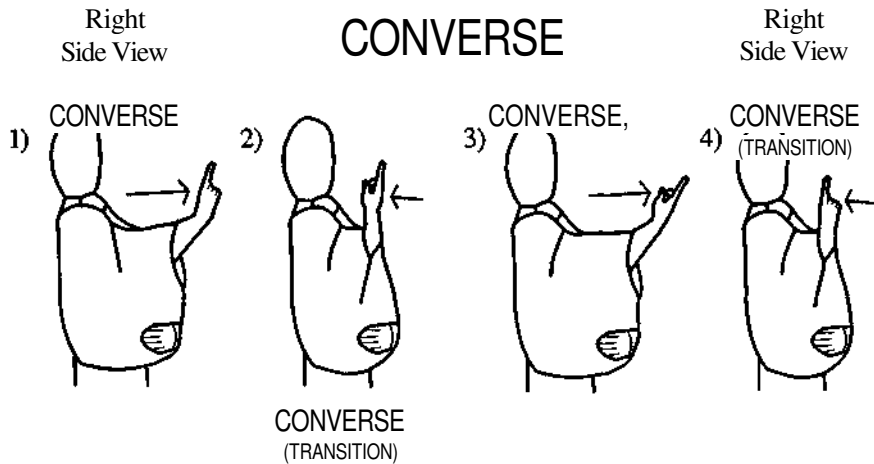


1) Hands begin with fingers slightly overlapping (L over R), just above eye level, palms facing down. 2) Trace a circle in the vertical plane, bringing hands together near abdomen. 3) Bring hands up to chest level. [Note: While making the circle, palms should face inward toward you and not be visible to one standing in front of you.]

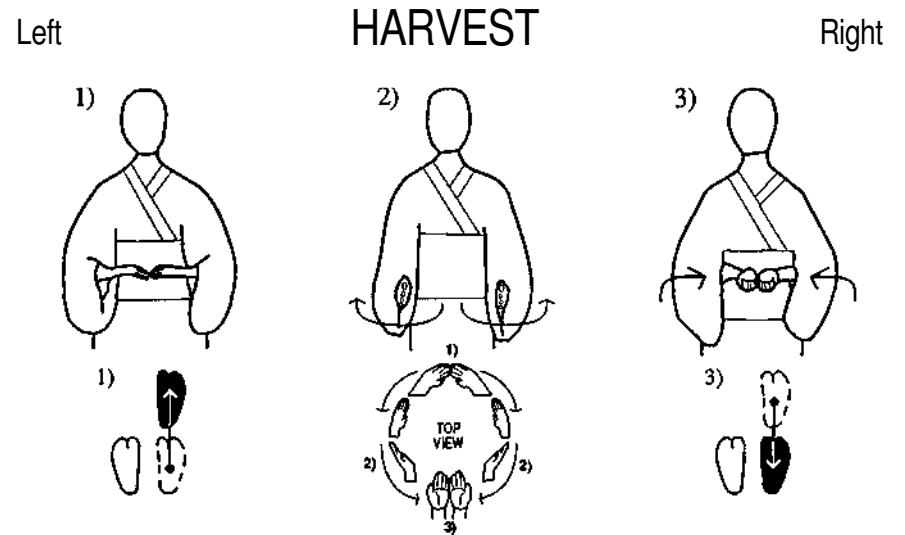


Left Side View Right Side View Right Side View Right Side View

1) Fan is taken from *Obi* belt, & 2) brought forward to L hand, holding the base, R hand near tip of fan. 3) Then fingertips of R hand slide straight back & fan touch base & 4) fan is raised to upright position.



With L hand holding R sleeve, 1) point R index finger up near mouth level, palm out, & push hand forward. 2) While bringing it back to mouth, turn wrist so that palm faces you at closest point to mouth. 3) With palm facing you, push hand forward. 4) Same as Step #2, but with palm facing out. [In XI-6 & XII-1/2/3, this starts from Step #3.]



1) With a R step, hands go in front, (L fingertips over R) palms **down**. 2) Trace a circle in the **horizontal** plane in front of the body. 3) With a R backstep, bring hands together in front of abdomen, palms **up**.

BASIC HAND MOVEMENTS: Circle - Harvest

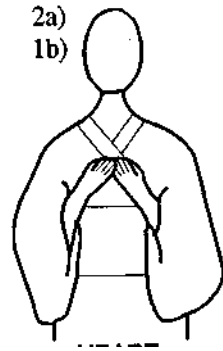
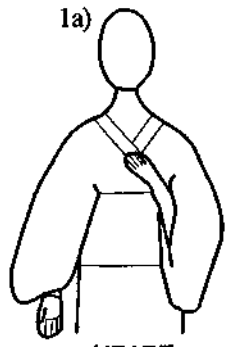
## HEART

Right

Left

## HEW WOOD

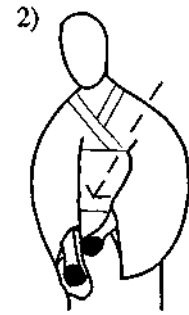
Right



1a) R hand goes to center of chest, 2a) then L hand does the same, (L fingertips slightly overlapping R.) Ib) BOTH R and L hands go to center of chest with the same results as Step #2a. [Note: Fingers & thumbs stay together, and hands more or less rest flat on chest.]



1)  
R Diag  
Step Toe  
Tap



2)  
R Toe  
Tap



As R foot moves diagonally slightly in front of L foot, body faces about 45° to the Left, and 1) with fisted hands—brought up to shoulder level 2) strike down diagonally towards the R foot twice. Tap the R toe 2 times with hand movements.

Left

## HIGHTHROW

Right

Left

## HOEING

Right



HIGHTHROW,

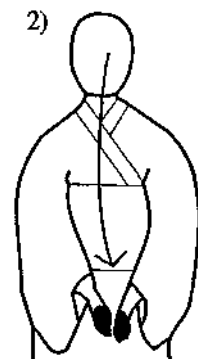


HIGH THROW

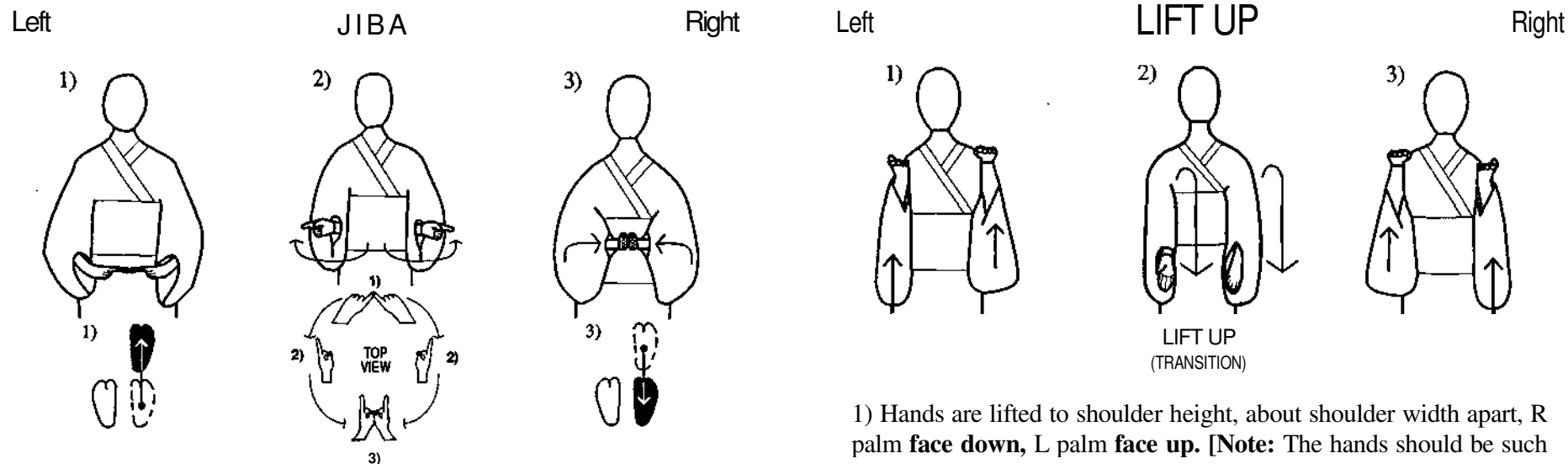


HIGH THROW<sub>R</sub>

The hands begin at a high "PRAY" position (With Hands Separated).  
1) Hands are thrown upward diagonally forward towards the Left,  
2) then hands come down slightly and go thru "PRAY" position and  
3) are then thrown to the upper Right. Repeat once more to Left.

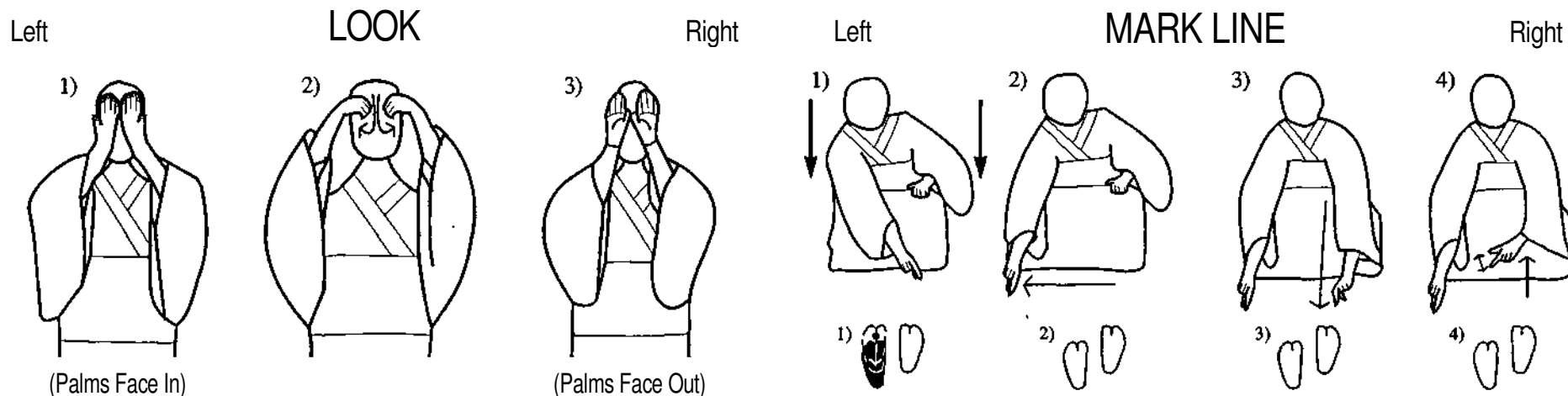


1) With both hands fisted and raised—to head level (R hand above L)  
2) the arms strike down twice directly in front of the body. [Note: Do not confuse this movement with the above HEW WOOD.]



1) With R step forward & index fingers touching (L over R), hands go forward. 2) Trace a circle in **horizontal** plane. 3) With a R back step (some exceptions), hands meet with index fingers pointing forward.

1) Hands are lifted to shoulder height, about shoulder width apart, R palm **face down**, L palm **face up**. [Note: The hands should be such that, if they were brought together, palm faces would touch.] 2) Then hands go down, turning over, and 3) lift up again, now with L palm **face down**, R palm **face up**. Repeat as appropriate.

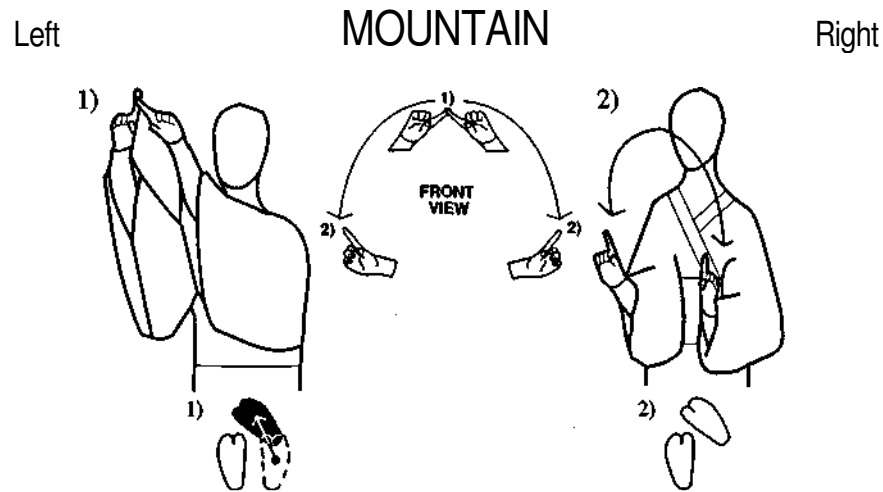


1) The hands begin in front of the face, with palms **facing in** towards the head. 2) Then using wrists, the hands turn inward and down, and 3) finally end with palms **facing out**, in front of face. [In VI-9's "**Minya**," a variation occurs with only Step #1.]

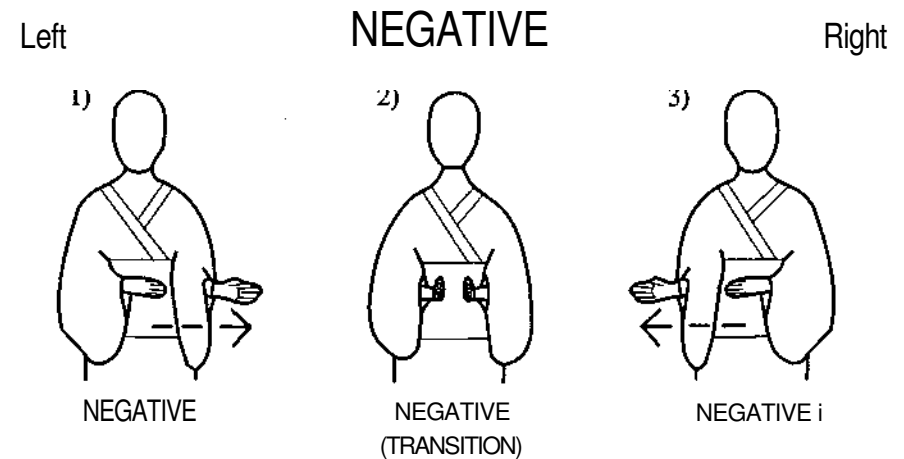
1) Pulling L foot slightly back, squat down placing R hand on R knee with L index finger and thumb pinched in front of R foot. 2) Draw a straight line from Right --> Left with L hand. 3) Bring R hand down with the index finger and thumb as if about to pick up something. 4) Make a plucking movement upwards in front of R knee.

BASIC HAND MOVEMENTS: Jiba - Mark Line

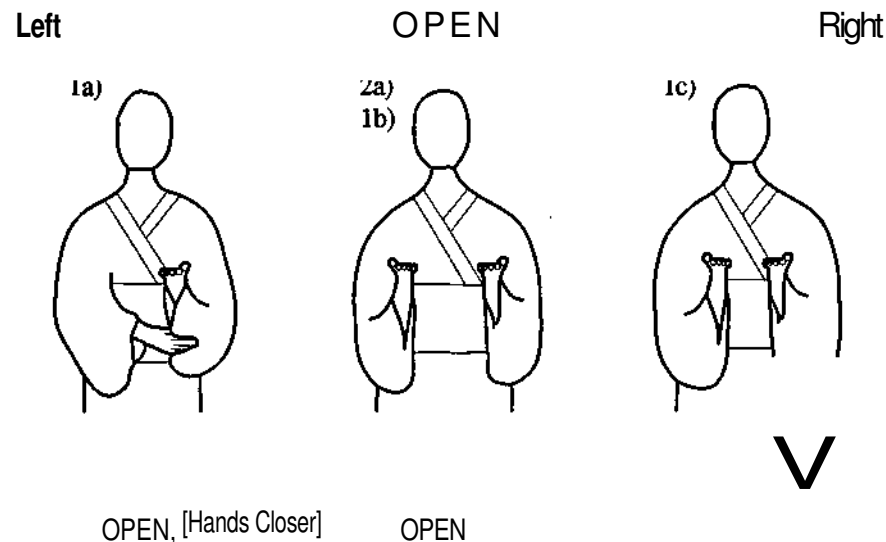
BASIC HAND MOVEMENTS: Mountain - Open Fan



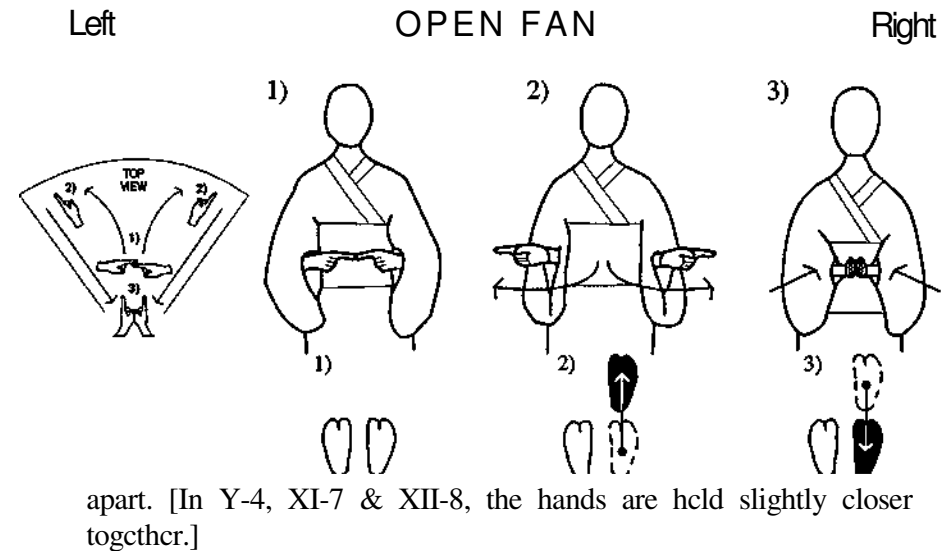
1) Stand facing diagonally to the Left, and bring index finger to forehead level (L over R). 2) Trace a half circle with index finger, down to the sides, stopping when elbows touch the side of ribs. [Note: index finger point up about 45° to sides at end of movement.]



Hands start by going slightly to one side at waist level, palms parallel, facing each other. 1) Hands then wave to opposite side, **parallel** to ground, keeping elbows close to sides of body—usually starting to R. 2) Then, going thru start position, 3) to the Left. Repeat as needed.



1a) [In SS-II & 1-3/9] The Right hand opens at chest level with palm facing up. 2a) [In SS-II] The Left hand does the same. 1b) In all other cases of this movement, both hands open simultaneously at chest level with palms up, about shoulder width

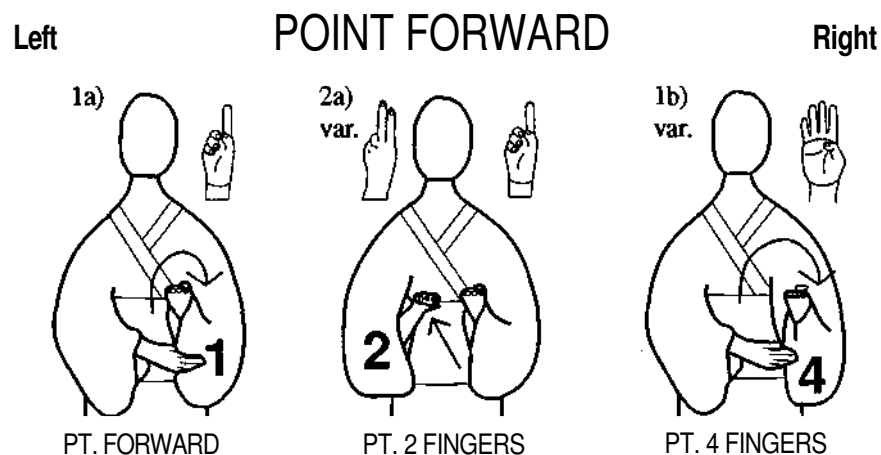


apart. [In Y-4, XI-7 & XII-8, the hands are held slightly closer together.]

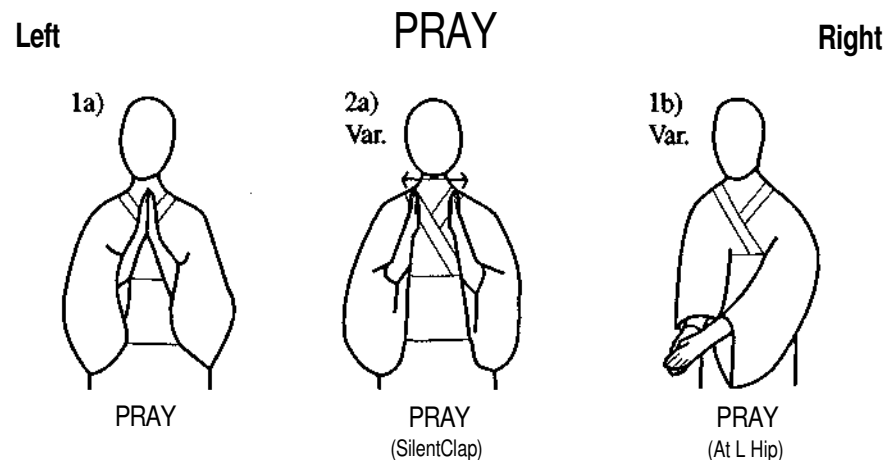
1) index fingers touch in front of waist (L in front of R), palm facing body. 2) With a R step, move hands forward & out to sides. 3) With a

BASIC HAND MOVEMENTS; Mounuln • Opon Fin

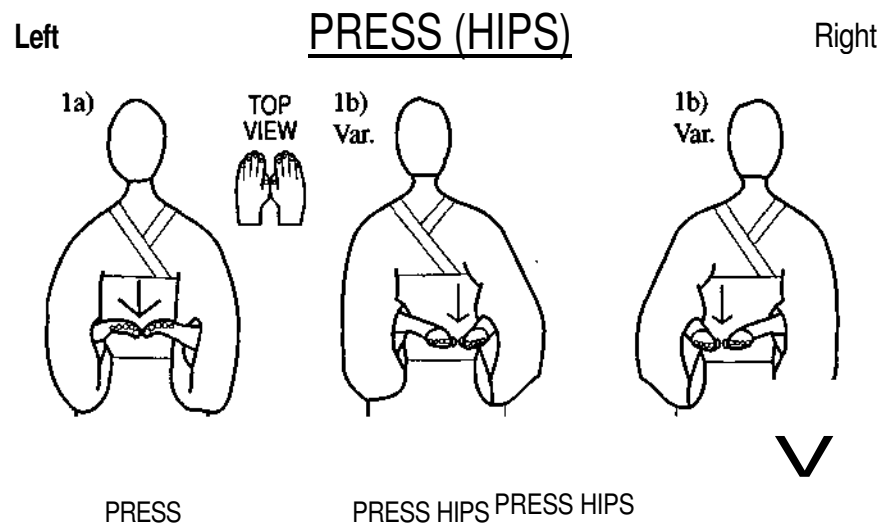
R backstep, pull hands back diagonally to waist so that hands touch & index fingers point forward. [Note: Do not confuse with JIBA.]



1a) Turning wrist over, point R Index finger forward, palm **facing up**.  
 2a) [In IX-1] After doing Step #1a) the L Index & middle fingers of Left hand point forward, palm **facing down**. **1b)** [In XII-5's **Yo nin** with thumb tucked, the four fingers, slightly separated, of the R hand point forward, palm **facing up**.]

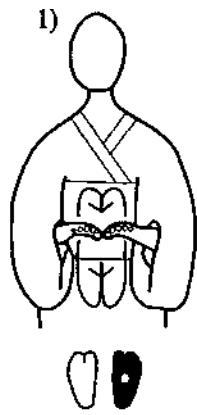


1a). Hands are held in front of the chest with palms lightly held together. 2a) [In **IX-9's Totemo**] From PRAY, hands come apart slightly and come back together, making a "silent clap." **1b)** [In **1-5's Itsumo**] With a small L step, hands go down in front of L hip, hands palm to palm, with R on top of L, but L hand slightly forward.



1a) Hands side by side, with palms facing down, press down with a firm movement at waist, 1b) Same action as PRESS, except that hands press alternately (2-4 times) at each hip or only once at L or R. [Note: When pressing, thumbs are level with other fingers-not curled under Index fingers-and can be seen

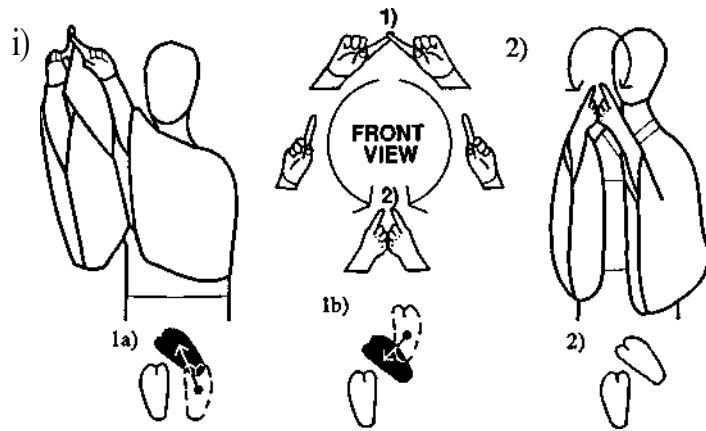




1) Begin with PRESS movement. 2) Then quickly turn hands toward body and over to RECEIVE position, with hands cupped, held in front near middle of the chest or higher. [Note: Always end with hands touching.] [Except for VIII-7, this occurs stepping first R then L]

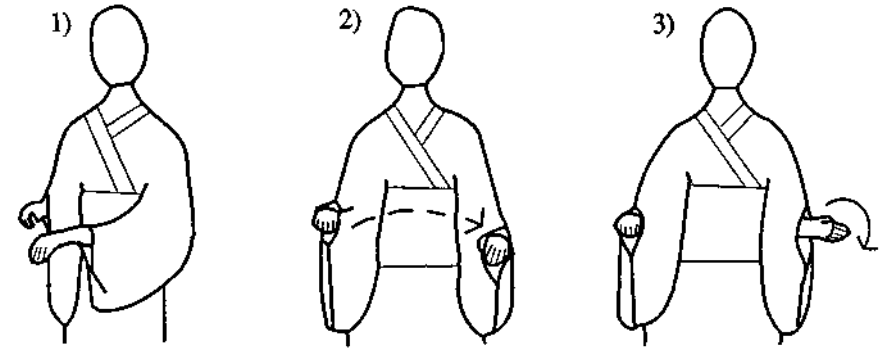
BASIC HAND MOVEMENTS: Point Forward - Quickly

Left **SMALL CIRCLE** Right



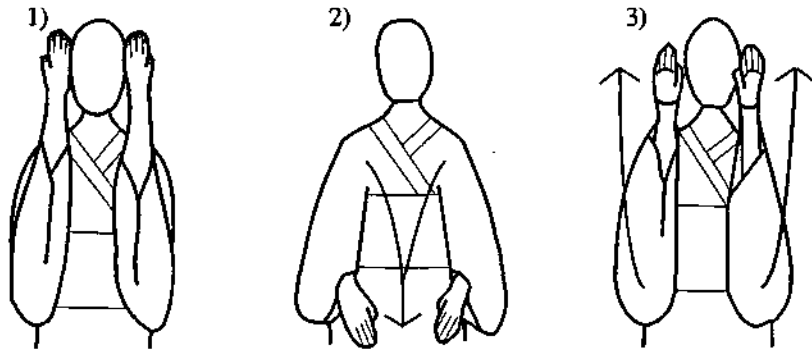
1a-b) Bring R foot diagonally in front of L foot, with index fingers of both hands in front of face, palms **facing out**, just above forehead level. 2) Then, trace a small circle, turning wrists ending with palms **facing body** now. [Note: Same hands as MIRROR & MOON-SUN.]

Left **SOW** Right



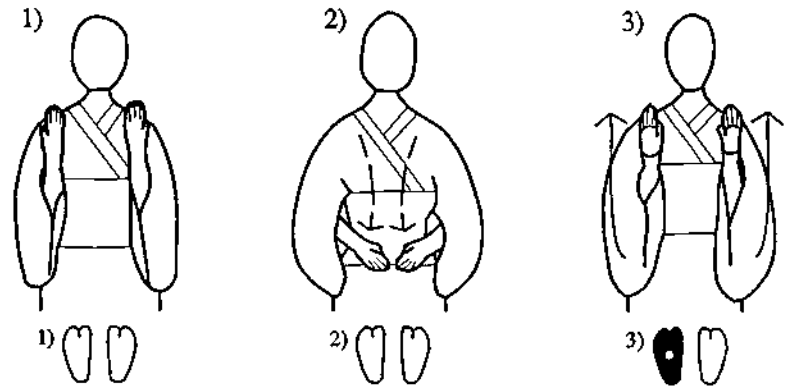
1) L hand is poised as if holding a bucket at L side; R hand, with fingers touching thumb, reaches under L hand. 2) R hand moves to the Right, and 3) R hand fingere open and wrist turns over, leaving the palm facing up.

Left **SWEEP BODY** Right

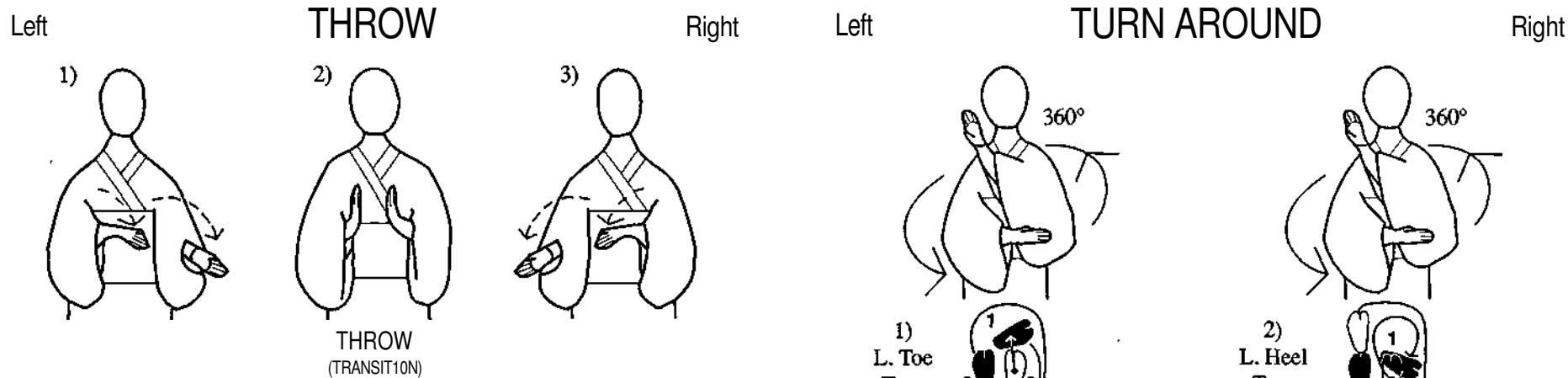


1) Hands begin in front of face, with palms **facing** the **body**, 2) then hands sweep down body with the full arm's length, and 3) in a continuing action, the hands rise again in front of face, but with palms **facing out now**.

Left **SWEEP HEART** Right

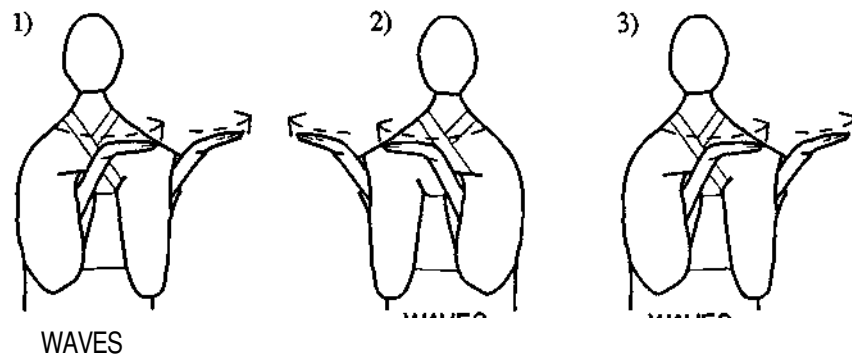


This is similar to SWEEP BODY, but limited to the chest área. 1) At shoulder level, palms **face body**. 2) Hands sweep down to waist, & 3) come up to shoulders, palms **facing out**. [Except for VIII-7, in the dance, the above steps are done 3 of 4 times (with Sumikir[i/e]).]

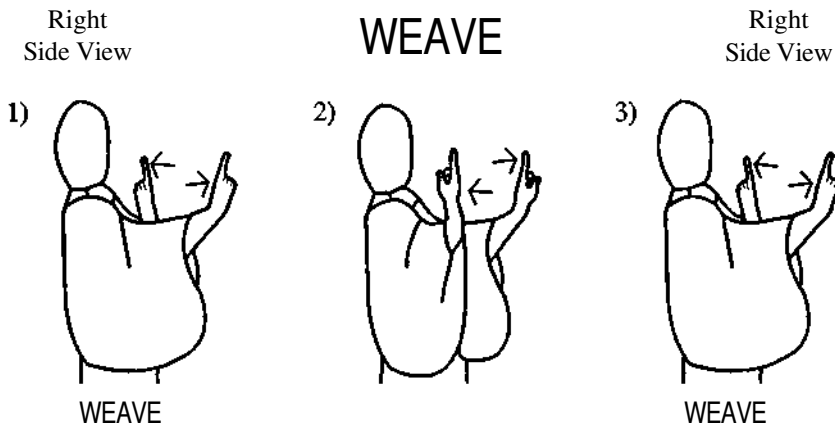


The hands begin at a low "PRAY" position (With Hands Separated). 1) Hands go diagonally forward, usually to the Right, R hand slightly lower than L. 2) Then hands come up and go thru "PRAY" position and 3) are thrown to the Left. Hands are more or less parallel when thrown. Repeat as needed.

The R hand, palm out, is held in front of L shoulder, with the back of the R hand parallel to L cheek. L hand holds R Sleeve. A full 360° turn is made holding the hands in place. [The two basic foot step turns for this movement are shown above.]



1) With palms facing down, starting to the R side, the hands move across horizontally at chest level, with a very slight flicking action at end. 2-3) Go to other side or repeat--as appropriate. [In Y-I, this is done at shoulder level starting to the L side. Hands move from side to side straight across, without any flick up at end.]



This is similar to CONVERSE movement, except that both hands move. 1) With both index fingers pointing up, the R hand, palm out, pushes away from body, while L hand, palm in, pulls in towards mouth. 2-3) Then hands alternate back and forth, turning the wrists in the same fashion as in CONVERSE. [In VI-6's sensuji ya, starts with Step #2.]

BASIC HAND MOVEMENTS: Throw - Weave

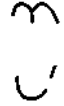
FOOT MOVEMENT EXPLANATIONS : Basic Feet



**BLACK FOOT** - The moving foot's new position.



**GREY FOOT** - The moving foot's new position, but it is **not** actually planted down or "stepped."



**DOTTED FOOT**- The moving



**WHITE FOOT**- Thenon-movingfoot.



**ARROW** - This indicates the direction and location from where the moving foot came.



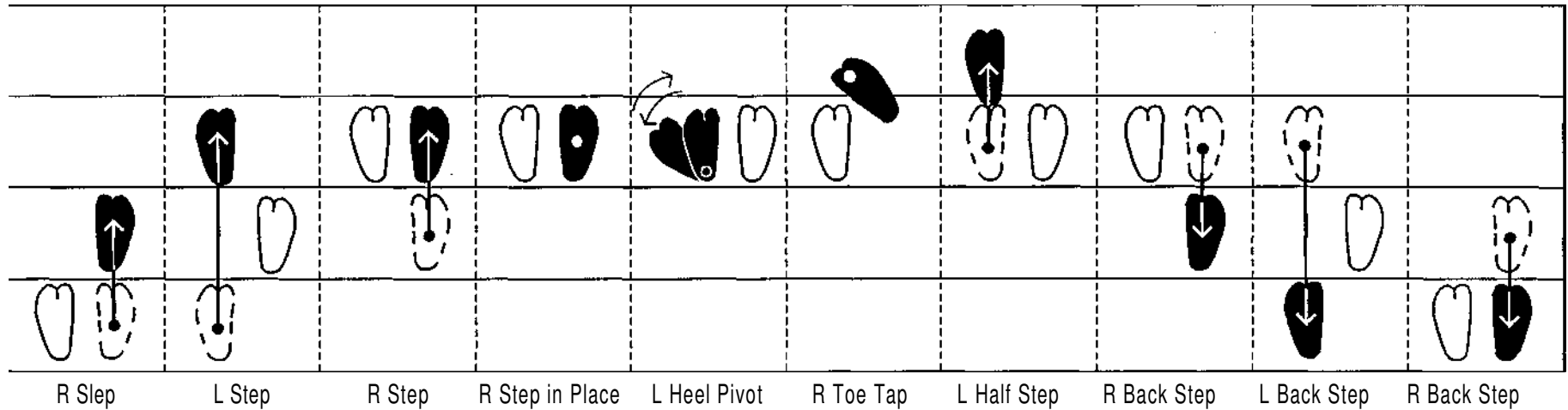
**DOT** - This indicates a foot stepping in place.



**DOUBLE DOT**- This indicates a pivoting or rotating motion at the specified point.



**TOE DOT** - This indicates the tapping of the toe.



\*Due to page space limitations and variances in the size of each individual's step, the above "foot grid" is meant to be a **relative** guide, **not** an **absolute** one. However, because the *Otefiri* is performed by 6 dancers, it must be stressed that rather than the actual size of one's step, it is more important to maintain harmony and to be in unison—

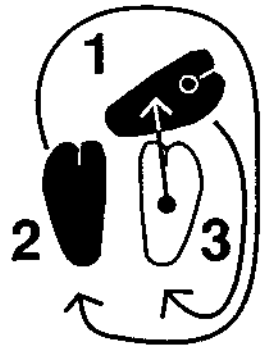
in line-with the 5 other dancers. Based upon this understanding, the above foot step formal is presented. Please note the following:

\*The above steps are **about** 1.5 foot lengths. "Half Step" is **about** 1.0 foot length.

\*Except in 4 cases, if hand movement is to the Right, the R foot moves & vice versa.

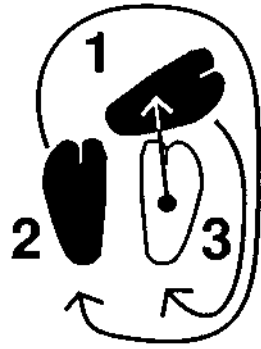
FOOT MOVEMENT EXPLANATIONS : Basic Oct

FOOT MOVEMENT EXPLANATIONS : Turn Around Feet



### L TOE TURN

1) Bring R heel up to L toe, then rotate 360° on "R toe." 2) L foot goes around R foot to initial position—as you finish Step #1. 3) R foot goes to original position.



### L TOE TURN (Alternate)

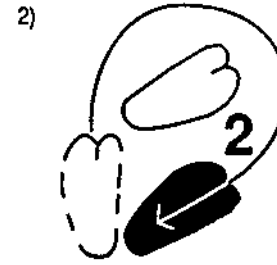
Due to the difficulty of the method to the left, you may do as follows: 1) Bring R heel up to L toe. 2) L foot goes around behind the R foot. 3) Make a full circle turn.

## L TOE TURN



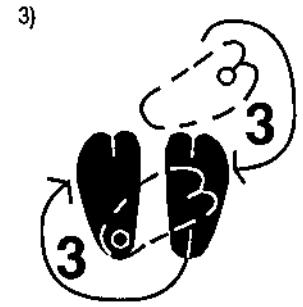
### R STEPTURN

1) Make a R step to prepare for the turn by bringing the R heel near L toe at angle of about 45°.



### BRING L FOOT AROUND

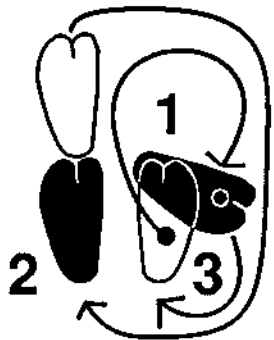
2) Bring the L foot around and behind the R foot.



### L HEEL & R TOE PIVOT

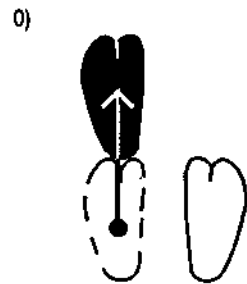
3) Pivot on L heel and R toe turning yourself in a 360° circle. If done properly, you should end with both feet even and together.

## L HEEL TURN



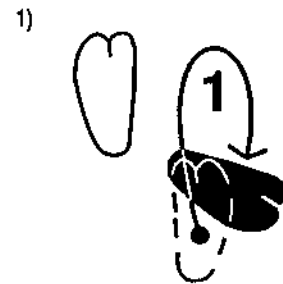
### L HEEL TURN

L half step. 1) R foot goes forward then back near L heel, rotating 360° on "R toe." 2) L foot goes around to initial spot as you finish Step #1. 3) R foot aligns with L.



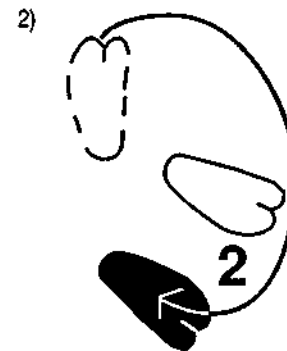
### L HALF STEP [L HEEL TURN (Alternate)]

For the same reason as above, you may use the method given at right. 0) A L "Half step" is taken prior to this turn.



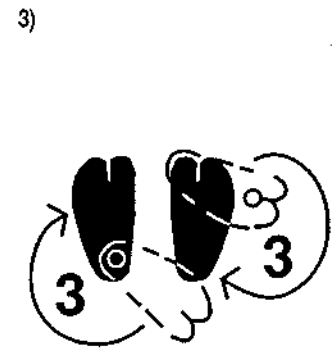
### R BACKTURN

1) Bring R foot forward then turn it back and put R heel near L heel, with R foot facing toward the rear.



### BRING L FOOT AROUND

2) Bring the L foot around and behind R foot, with L foot facing toward the rear.



### L HEEL & R TOE PIVOT

3) Pivot on L heel and R toe turning yourself in a 360° circle. If done properly, you should end with both feet even and together.

\*[Note: For all turns in this guide, the alternative "easier" turn methods are shown.]